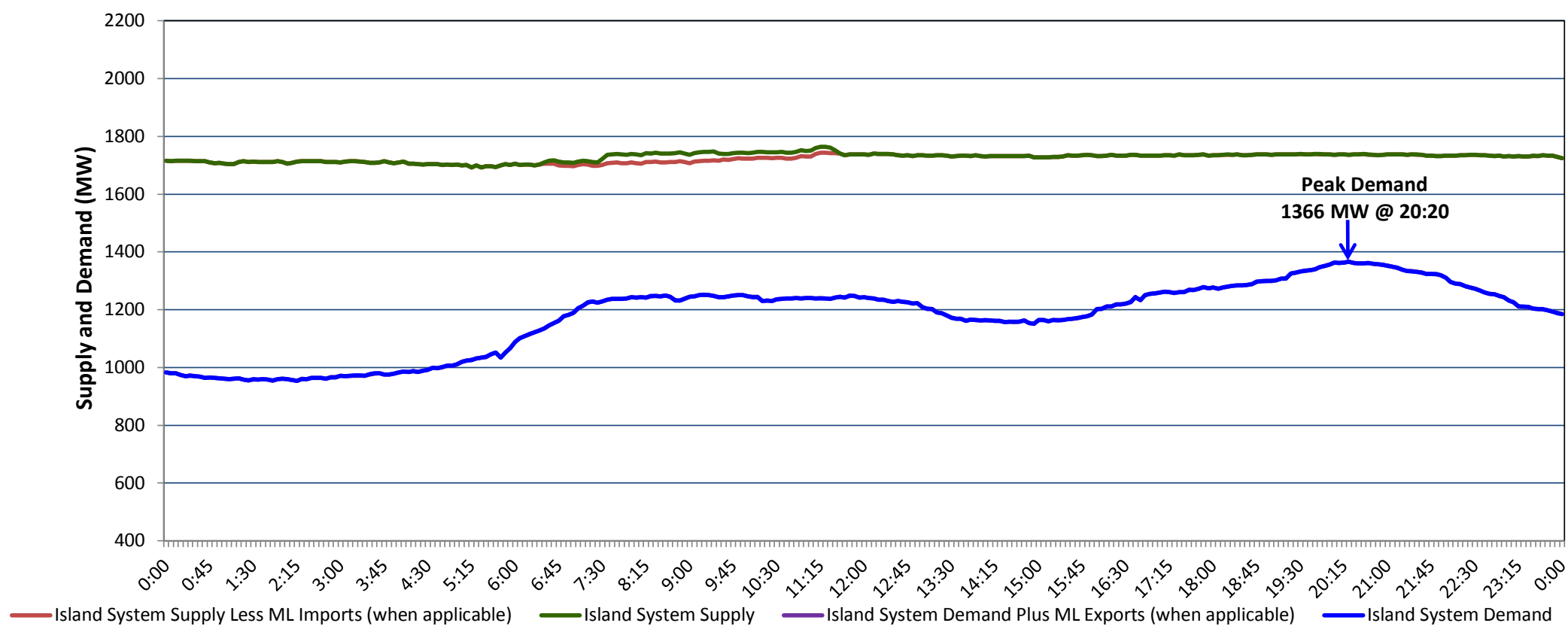


**Newfoundland Labrador Hydro (NLH)
Supply and Demand Status Report Filed Monday, April 09, 2018**

**Section 1
Island Interconnected System Supply, Demand & Exports
Actual 24 Hour System Performance For Friday, April 06, 2018**



Supply Notes For April 06, 2018

1,2

- A As of 2115 hours, January 04, 2018, Stephenville Gas Turbine available at 25 MW (50 MW).
- B As of 0325 hours, March 27, 2018, Holyrood Unit 1 available at 137 MW (170 MW).
- C As of 0801 hours, April 02, 2018, Holyrood Unit 3 unavailable due to planned outage 110 MW (150 MW).
- D As of 1300 hours, April 05, 2018, Hawkes Bay Diesel Plant unavailable (5 MW).
- E As of 1754 hours, April 05, 2018, Holyrood Unit 2 available at 80 MW (170 MW).
- F At 1106 hours, April 06, 2018, Paradise River Unit available (8 MW).

**Section 2
Island Interconnected Supply and Demand**

Sat, Apr 07, 2018	Island System Outlook ³	Seven-Day Forecast	Temperature (°C)		Island System Daily Peak Demand (MW)	
			Morning	Evening	Forecast	Adjusted ⁷
Available Island System Supply: ⁵	1,715 MW	Saturday, April 07, 2018	-2	6	1,370	1,290
NLH Generation: ⁴	1,390 MW	Sunday, April 08, 2018	0	0	1,275	1,195
NLH Power Purchases: ⁶	115 MW	Monday, April 09, 2018	7	-2	1,370	1,290
Maritime Link Imports:	- MW	Tuesday, April 10, 2018	-1	-1	1,385	1,305
Other Island Generation:	210 MW	Wednesday, April 11, 2018	-1	0	1,295	1,215
Current St. John's Temperature & Windchill: -2 °C	-8 °C	Thursday, April 12, 2018	0	-1	1,305	1,225
7-Day Island Peak Demand Forecast:	1,385 MW	Friday, April 13, 2018	0	3	1,235	1,155

Supply Notes For April 07, 2018

3

- Notes:
1. Generation outages for running and corrective maintenance are included. These are not unusual for power system operations. They generally do not impact customer supply. The power system operators schedule outages to system equipment whenever possible to coincide with periods when customer demands are low and sufficient supply reserves are available. However, from time to time equipment outages are necessary and reserves may be impacted.
 2. Due to the Island System having no synchronous connections to the larger North American grid, when there is a sudden loss of large generating units some customer's load must be interrupted for short periods to bring generation output equal to customer demand. This automatic action of power system protection, referred to as under frequency load shedding, is necessary to ensure the integrity and reliability of system equipment. Under frequency events typically occur 5 to 8 times per year on the Island Interconnected System and the resultant customer load interruptions are generally less than 30 minutes.
 3. As of 0800 Hours.
 4. Gross output including station service at Holyrood (24.5 MW) and improved NLH hydraulic output due to water levels (35 MW).
 5. Gross output from all Island sources (including Note 4).
 6. NLH Power Purchases include: CBPP Co-Gen, Nalcor Exploits, Rattle Brook, Star Lake, Wind Generation, Vale capacity assistance (when applicable).
 7. Adjusted for CBP&P and Maritime Link Exports.

**Section 3
Island Peak Demand Information
Previous Day Actual Peak and Current Day Forecast Peak**

Fri, Apr 06, 2018	Actual Island Peak Demand ⁸	20:20	1,366 MW
Sat, Apr 07, 2018	Forecast Island Peak Demand		1,370 MW

Notes: 8. Island Demand / ML Exports (where applicable) is supplied by NLH generation and purchases, plus generation owned and operated by Newfoundland Power and Corner Brook Pulp & Paper (Deer Lake Power, DLP).